

Mobile Shelving S90

Visit www.constructor.no/en/Products/Small-Part-Handling/Mobile-Shelving-S90/ for the latest information.

With a wide selection of shelving options to suit various situations and a range of plastic storage bins for storing small parts, we can offer comprehensive solutions for any small parts storage or picking area.

Narrow bay boltless shelving or longspan mini racking systems for heavier items with a comprehensive range of accessories including carton flow and mini load systems means that Constructor can improve any picking area for optimum space and efficiency.

Mobile Shelving S90 is a product in the category

Small Part Handling

Hi280 Shelving System Standard

Hi280 Longspan

Hi280 Mobile Shelving System

Hi280 Multi Tier Shelving

Hi280 Shelving System Narrow Aisle

Carton Flow

Longspan Shelving

Plastic Bins & Containers

Sign & Marking Systems

Storage Cabinets

Slotted Angle

S90 - standard

Mobile Shelving S90

Multi Tier - S90

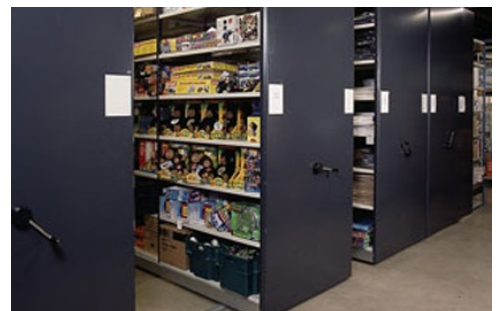
Please visit www.constructor.no to see our other products.

Description

Oceans of virtually dust-free space are created by the ergonomically designed Constructor S90- mobile storage system. We will develop the perfect solution for your particular filing and storage situation, taking into account your specific needs and wishes.

- The mobile storage system can be adapted to any construction and fitted around specific building constraints, such as pillars and ventilation shafts.
- The drive system ensures effortless movement of the mobile system, regardless of the content or the number of racks.
- Various locking devices help protect the contents of the mobile units from unauthorized access.

Small Part Handling › Mobile Shelving S90





Products

Focus on space efficiency

- Almost doubles the storage capacity.
- Adapts to the building constraints; all objects, such as pillars and ventilation shafts will be integrated in the design.

Focus on effortless operation

- With a choice from 2 different drive options, S90-mobile adapts to its load capacity, ensuring effortless operation.

Focus on safety

- Can be equipped with aisle safety to prevent movement of the mobiles during storage and retrieval.

Focus on protection

- Available as completely emission free storage system.

Focus on security

- Base-to-base coupling, to interconnect mobiles
- Aisle lock, to lock the movement of cranks
- Double doors, to lock a number of sections

Focus on quality and sustainability

- High construction quality and perfect finish.
- Complies with standard SFS 5187
- Produced according to ISO 9001

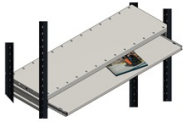
Focus on design

You can choose finishing options:

- Front panels may be finished in steel

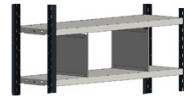


Accessories for Small Parts Shelving S90



Pull-out Shelf S90

For installation under shelf or instead of shelf.



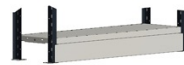
Shelf divider

Galvanized



Hanging bar

Tube galvanized, end bracket grey RAL 9002.



Plinth

Painted grey.



Double door

A lockable door unit, which is fixed to the front edge of the bay. Converts the bay to a cupboard.



Back panel

Back panels are delivered in two or three pieces. The plastic joining ribs and end ribs are included.



End panel

Painted grey or galvanized.



Dividing panel

Painted grey or galvanized.